

# Data Access Made Simple: For the Public and Professional World.

SURFACE WATER MONITORING | METEOROLOGY | FLOOD FORECAST |  
WATER QUALITY | DISCHARGE MEASUREMENTS

River	Station	Number	Timestamp	Water level	Situation	Trend	-2h	-4h	-6h	12h	24h	180 AL1	AL2	AL3	A
Zwickauer Mulde	Zwickau	562070	24.01.2007 22:00	86 cm	OK	OK									
Zwickauer Mulde	Zwickau	562115	24.01.2007 22:00	85 cm	OK	OK									
Freiberger Mulde	Freiberg	566100	24.01.2007 22:00	138 cm	OK	OK									
Mulde	Castell	560021	24.01.2007 22:00	151 cm	Normal	OK									
Mulde	Bad Dübau	560051	24.01.2007 22:00	221 cm	Normal	OK									
Mulde	Muldeneck	560071	24.01.2007 22:00	588 cm	Normal	OK									
Mulde	Muldeneck	560072	24.01.2007 22:00	159 cm	Normal	OK									
Mulde	Proßlau	560090	24.01.2007 22:00	101 cm	Normal	OK									
Mulde	Deutschaue	560110	24.01.2007 22:00	352 cm	Normal	OK									
Mulde	Deutschaue	560130	24.01.2007 22:00	105 cm	Normal	OK									

Water management data can be made available online in a web browser (such as Internet Explorer or Firefox) using WISKI Web. WISKI Web displays data in different formats: graphs, tables and maps, and also allows users to download data to a local computer.

Depending on your interests or task, various WISKI Web solutions are available to simplify your workflow. WISKI Web Public is targeted towards public use and presents short and concise information - for example with regard to the current high water situation.

WISKI Web Pro, on the other hand, is capable of processing more extensive tasks. It allows access to larger amounts of data and offers more flexibility in its operation.

### Information for the general public

WISKI Web Public provides river data in a format accessible to interested members of the general public. The accessible information includes maps, lists, time series graphs and files for download. Functions include:

- Time series graphs with different time ranges (week, month, year)
- Time series graphs with alarm thresholds, limit values or warning thresholds
- Ready to use static background maps, on which the current (water) levels are displayed through coloured symbols
- Sensitive maps with a "tooltip" window which appears when the user moves the mouse over a station symbol, and a station page which can be opened by clicking
- Overview lists with current values and coloured classification (e.g. alarm threshold value 1 exceeded in orange, alarm threshold value 2 exceeded in red)
- Overview lists with multiple columns in which additional parameters or long-term values may be displayed

- Data download for the time ranges week, month and year in different formats (e.g. XLS)
- "Publication" and release of stations or individual graphs from within the internal system.

WISKI Web Public has only basic system requirements. Generally, an up to date, dedicated computer on the internal network will suffice. The entire system is produced internally and transferred onto an external Web server.

### Information for Experts

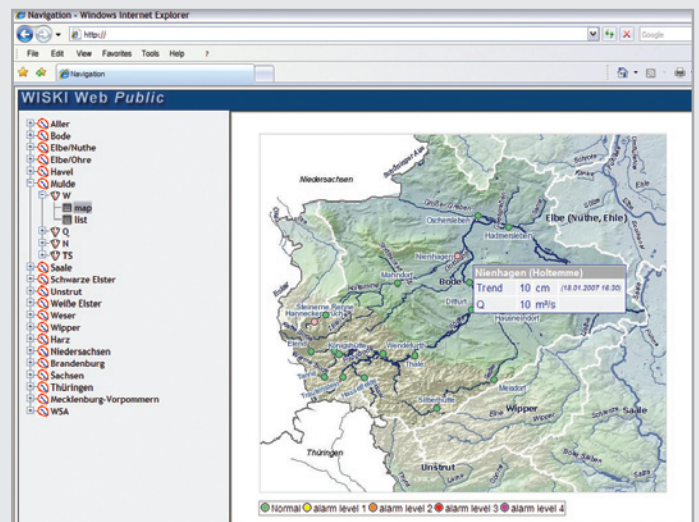
Comprehensive data is required by certain user groups, such as in house staff from other departments, universities, engineering offices, or other organisations with which data exchange agreements have been signed. WISKI Web Pro is ideally suited to the demands of these users.

The system is characterised by the following properties:

- User specific login
- User type specific access rights for visible stations, parameters and time series
- User type specific access rights for function availability
- Direct access to the database – consistently providing a current data overview
- Input of filter criteria for fast retrieval of individual stations

- Interactive time series client – time ranges can be entered freely
- Administration interface for access rights assignment
- Administration interface to block user access

Increased system requirements must be met to handle direct database access. Several computers must be included (depending on local IT guidelines), and the database may need to be replicated from the internal to the external network (through a firewall).



Progress and success in water management:  
**With WISKI Web and the competence of pioneers.**